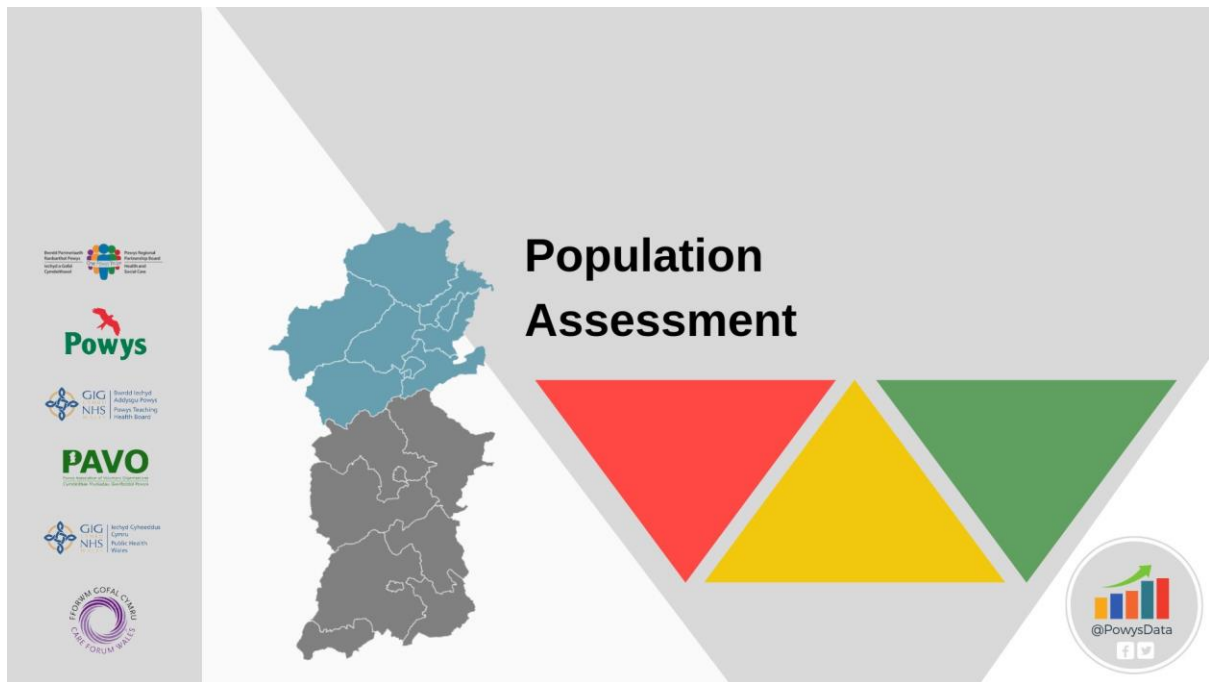


Appendix A: North Powys Wellbeing Assessment



North Powys

What areas are in North Powys?

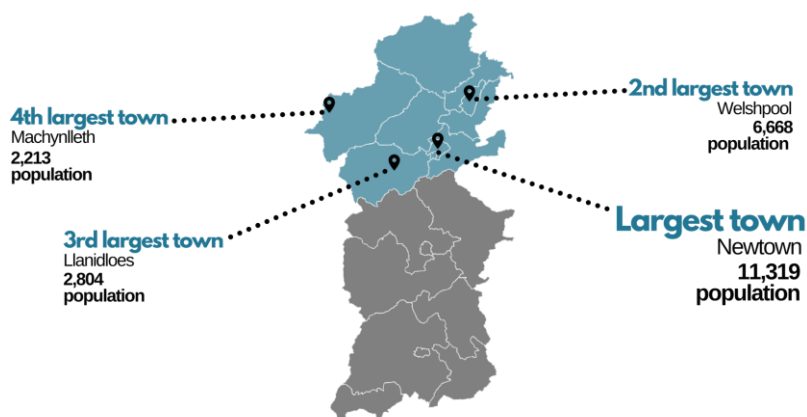
Select an area on the map to find out where it is located

Embed://<iframe width="600" height="600"

src="https://app.powerbi.com/view?r=eyJrjoiMTcyZmZIMzltODM5NC00OTU1LThiYTktMTBmNWUwMzk1OTAyliwidCI6ImMwMmWQ5ZWUxLTBIYjAtNDc1NC05OWFILTzYyYU4YTczMm1lMCIslmMiOjh9" frameborder="0" allowFullScreen="true"></iframe>

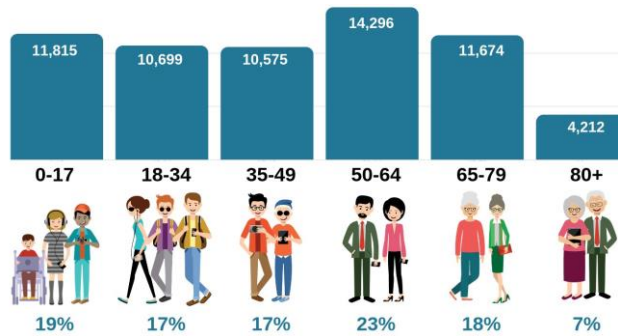
Population

North Powys Population **63,271**



The rest of the population are widely dispersed in smaller centres, hamlets and across many rural properties.

The age bandings spread is reasonably even across the North Powys area.



Travel times to Hospitals and Transport routes

Embed://<iframe width="800" height="600"

src="https://app.powerbi.com/view?r=eyJrIjoimGZjZjdINTEtMDZlOC00ZDYwLTk3ODctYjAxMDIkdNDgzOTIhIiwidCI6ImMwMWQ5ZWUxLTBhYjAtNDc1NC05OWFILTazYWU4YTczMmI1MCIslmMiOjh9" frameborder="0" allowFullScreen="true"></iframe>

Introduction

We conducted a detailed analysis of over 40 datasets.

These were split into the following reports:

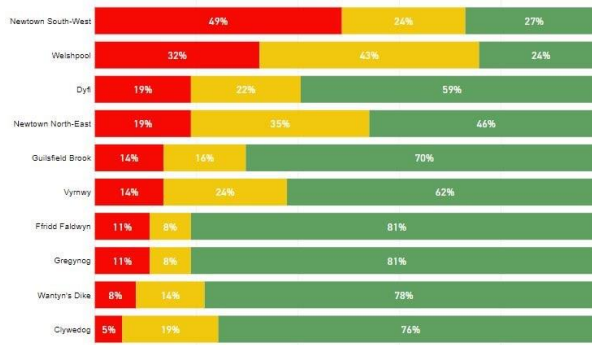
- Focus on Wellbeing
- The Big Four
- Joined Up Care

We have used the same methodology in all three reports and coloured an area red, amber or green (RAG) depending on how far off the Powys Average (mean average) they are.

The method we have used to calculate the Powys Average is:



Main findings



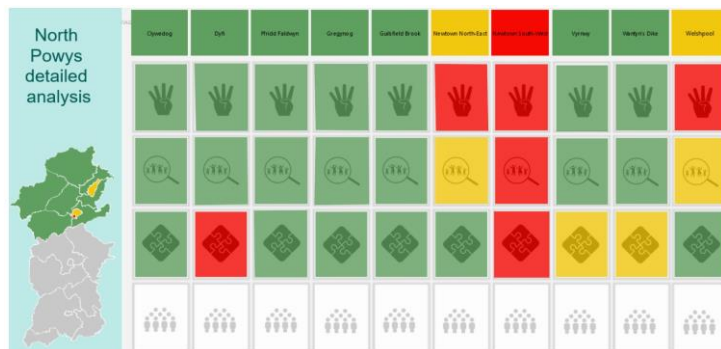
The Total Pressure Points visual shows the overall percentage of RAG (Red, Amber and Green) indicators in each North Powys Middle Super Output Area (MSOA).

This is calculated by counting each RAG for every data set we have analysed over all reports (Focus on Wellbeing, The Big 4 and Joined Up Care) and converting this into a percentage. There is variation in red, amber and green across all ten MSOAs in North Powys.

The MSOA with the largest proportion of red is **Newtown South-West** (red status for the Big Four, Focus on Wellbeing and Joined Up Care). Both **Newtown North East** and **Welshpool** had an overall amber status (red status for the Big Four, amber for Focus on Wellbeing and green for joined up care).

However, there are some interesting points to note particularly in terms of joined up care - whilst **Dyfi** is green overall, it had a red rating for Joined Up Care; and both **Vyrnwy** and **Wartyn's Dike** had an amber rating for joined up care.

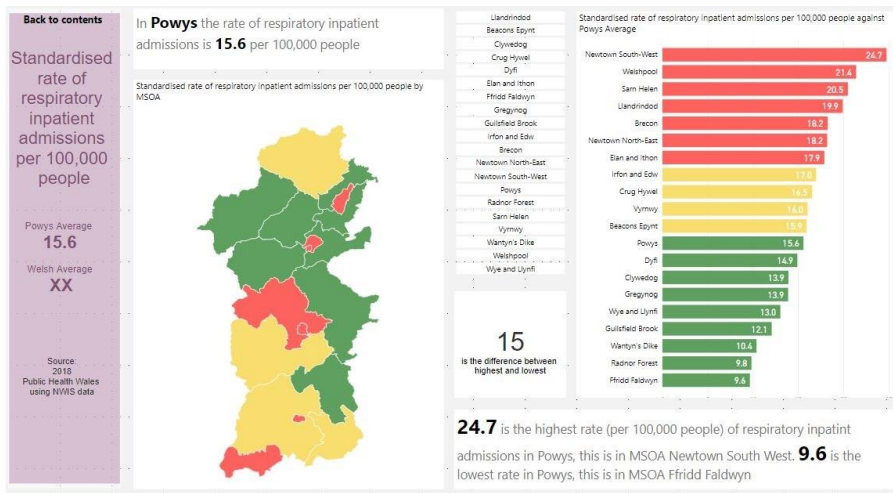
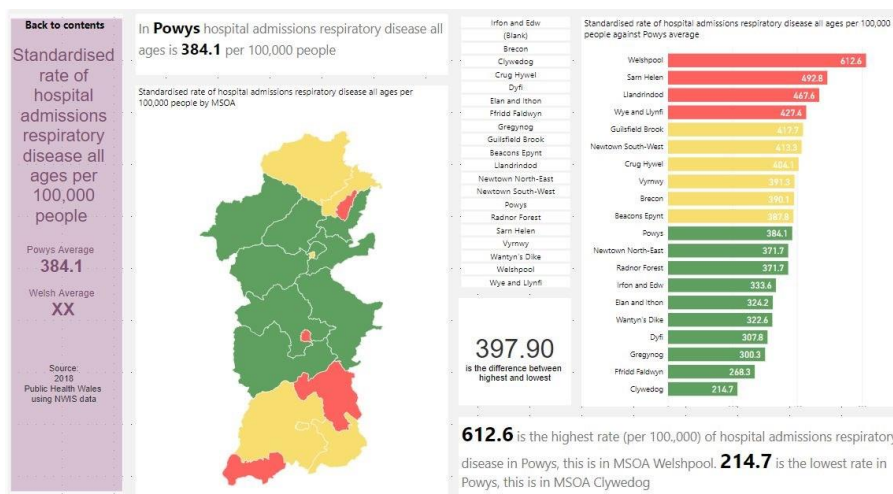
The following visual shows the variation across the ten areas in North Powys. The overall RAG for an area is shown on the top row, and the underlying rows represent The Big Four, Focus on Wellbeing and Joined Up Care. Workforce Futures has not been analysed at this stage.

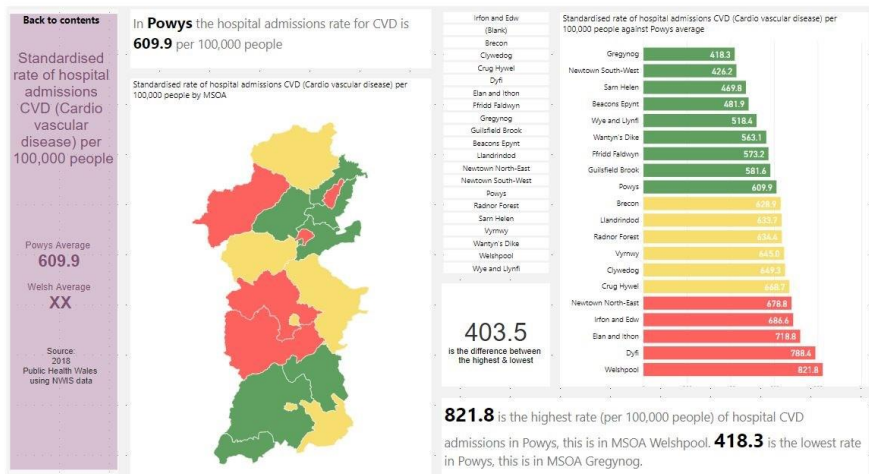
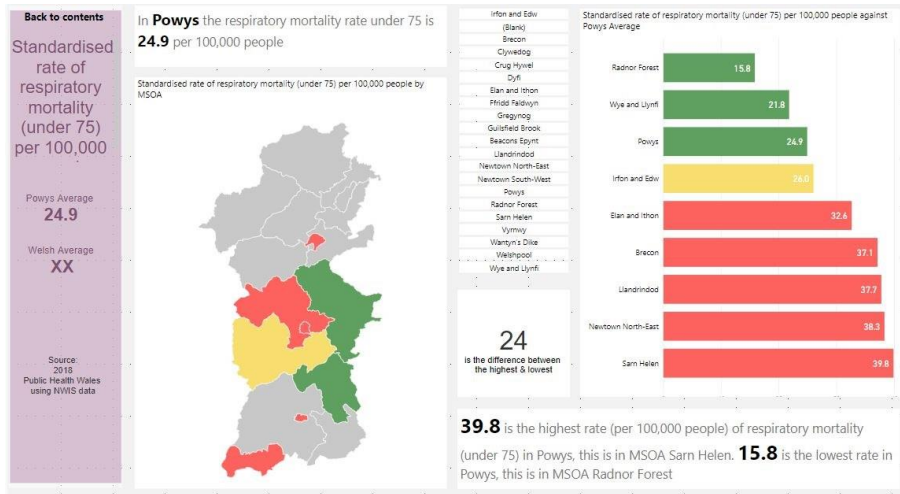


The Big Four

The **North Powys** area with the highest level of below average measures relating to the **Big Four** (cardiovascular, circulatory, respiratory disease and mental illness) is **Welshpool**

- Hospital admissions for respiratory diseases is highest in **Welshpool**
- Respiratory inpatient admissions are highest in **Welshpool and Newtown**
- Respiratory mortality for under 75's is above average in **Newtown North East**
- Hospital admissions for cardio-vascular disease is above average for **Welshpool, Dyfi and Newtown North East**





- **Circulatory disease inpatient admissions** is high in **5 out of 10** North Powys localities
- **Circulatory disease outpatient admissions** are above average in **6 of the 10** North Powys localities
- **Cancer mortality EASR** is above average in **Newtown South West, Dyfi, Welshpool and surrounding area of Fridd Faldwyn**
- Percentage of patients with **hypertension** is above average in **Machynlleth and Llanfair Caereinion GP practices**

[Back to contents](#)

Circulatory Disease in patient admissions

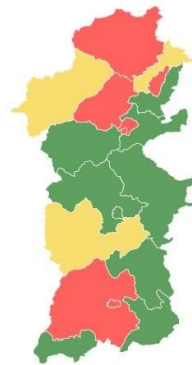
Powys Average
11.92

Welsh Average
XX

Source
2018
Public Health Wales
using NWS data

In **Powys** the rate of circulatory disease in patient admissions is **11.92**

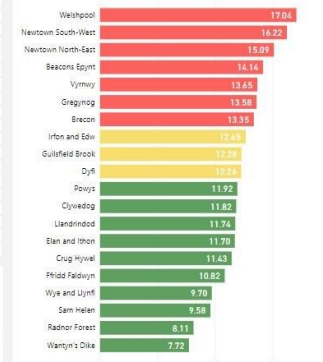
In patient (circulatory disease) by MSOA



- Beacons Epynt
- Brecon
- Clywedog
- Crug Hywel
- Dyff
- Elan and Ithon
- Ffridd Faldwyn
- Gregynog
- Gulfisfield Brook
- Irfon and Edw
- Llandrindod
- Newtown North-East
- Newtown South-West
- Powys
- Radnor Forest
- Sam Helen
- Ymryw
- Wartyn's Dyke
- Welshpool
- Wye and Llynfi

9.3
is the difference between
the highest & lowest

In patient (circulatory disease) by Powys average



17.04 is the highest rate of In patient admissions for circulatory disease this is in MSOA 17.04. **7.72** is the lowest rate in Powys, this is in MSOA Wartyn's Dyke

[Back to contents](#)

Circulatory Disease out patient admissions

Powys Average
17.21

Welsh Average
XX

Source
2018
Public Health Wales
using NWS data

In **Powys** the rate of circulatory disease out patient admissions is **17.21**

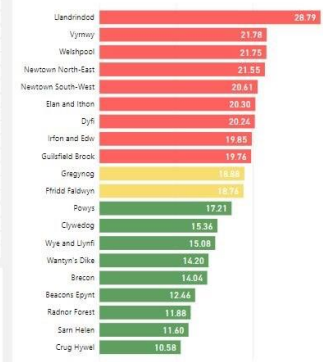
Out patient (circulatory disease) by MSOA



- Beacons Epynt
- Brecon
- Clywedog
- Crug Hywel
- Dyff
- Elan and Ithon
- Ffridd Faldwyn
- Gregynog
- Gulfisfield Brook
- Irfon and Edw
- Llandrindod
- Newtown North-East
- Newtown South-West
- Powys
- Radnor Forest
- Sam Helen
- Ymryw
- Wartyn's Dyke
- Welshpool
- Wye and Llynfi

18.2
is the difference between
the highest & lowest

Out patient (circulatory disease) by Powys average



28.79 is the highest rate of out patient admissions for circulatory disease this is in MSOA Llandrindod. **10.58** is the lowest rate in Powys, this is in MSOA Crug Hywel

[Back to contents](#)

Cancer mortality EASR per 100,000

Powys Average
137.1

Welsh Average
XX

Source
2018
Public Health Wales
using NWS data

In **Powys** the rate of Cancer mortality is **137.1**

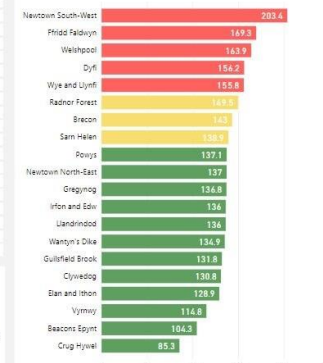
Cancer mortality by MSOA



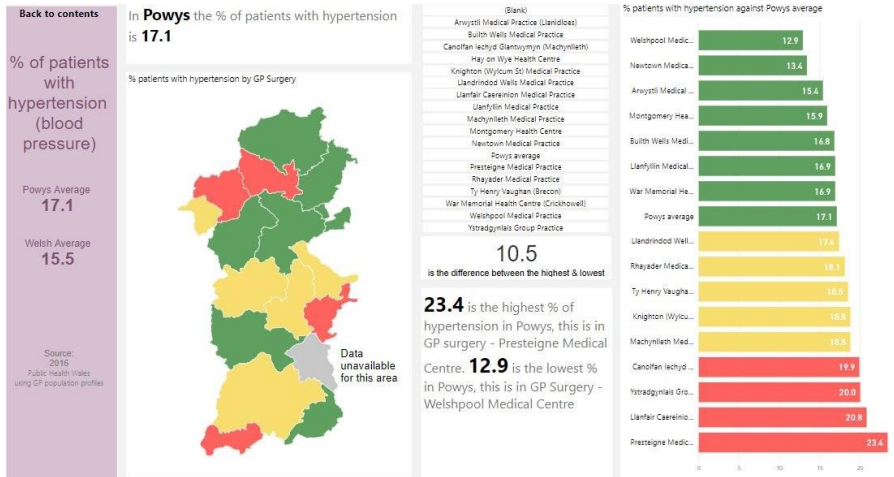
- Beacons Epynt
- Brecon
- Clywedog
- Crug Hywel
- Dyff
- Elan and Ithon
- Ffridd Faldwyn
- Gregynog
- Gulfisfield Brook
- Irfon and Edw
- Llandrindod
- Newtown North-East
- Newtown South-West
- Powys
- Radnor Forest
- Sam Helen
- Ymryw
- Wartyn's Dyke
- Welshpool
- Wye and Llynfi

118.1
is the difference between
the highest & lowest

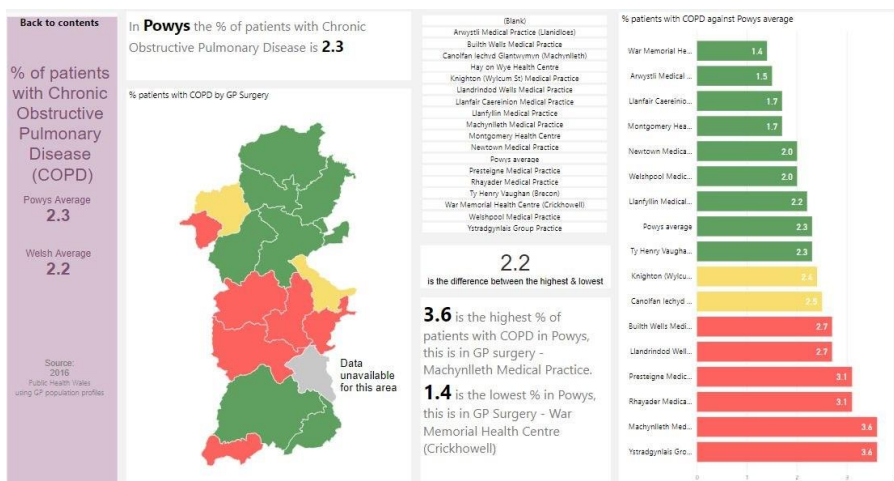
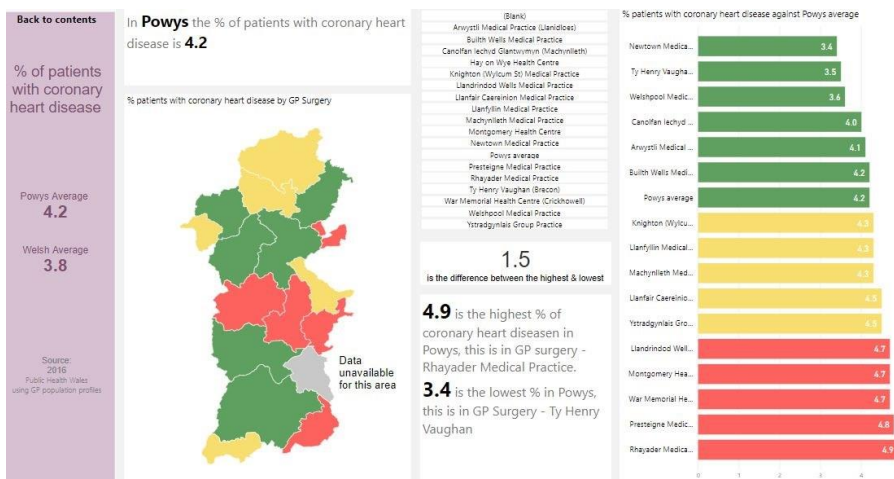
Cancer mortality by Powys average

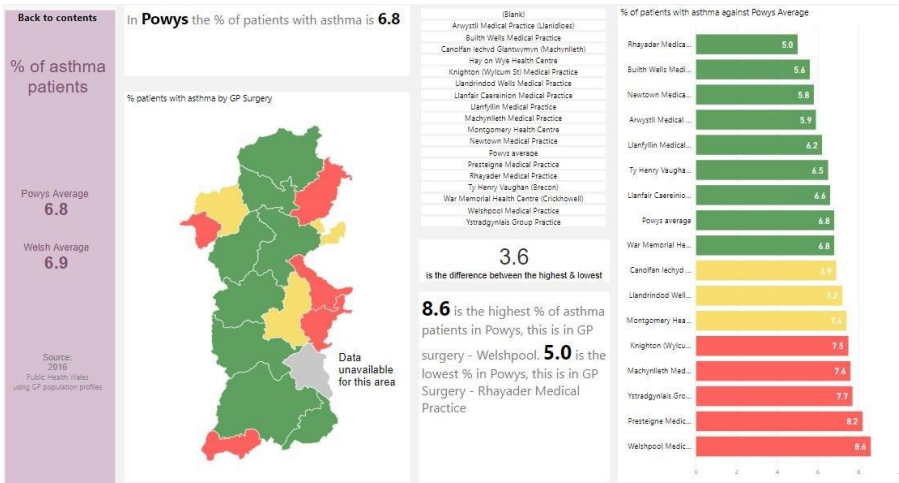
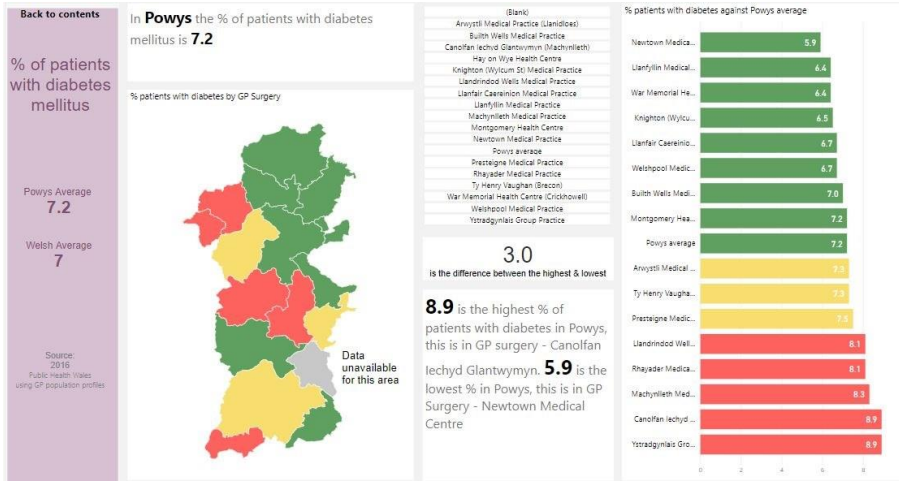


203.40 is the highest rate of Cancer mortality this is in MSOA Newtown South-West. **85.30** is the lowest rate in Powys, this is in MSOA Crug Hywel



- Percentage of patients with **coronary heart disease** is above average in **Montgomery GP** practice area
- Patients with above average **COPD** rates are found in the **Machynlleth Health Centre** area
- Above average number of patients with **Diabetes** are found in the **Machynlleth and Glantwymyn practice areas**
- **Asthma** sufferers are above average of **Machynlleth and Welshpool practices**

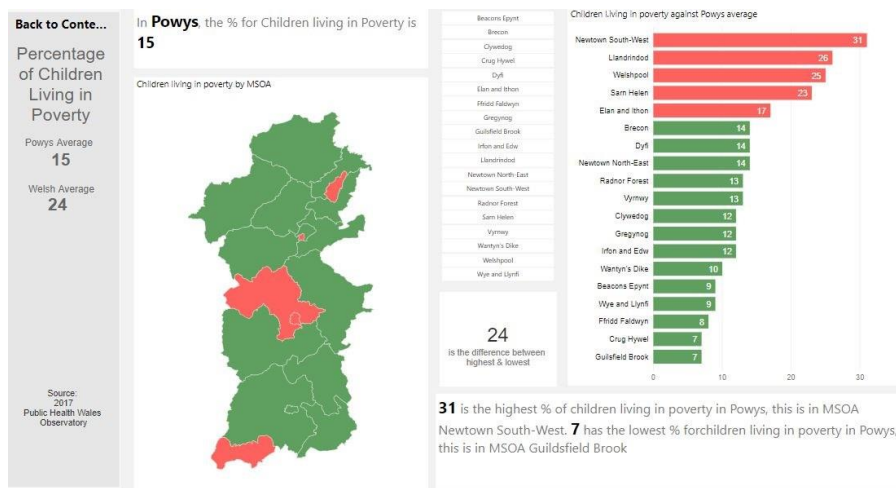
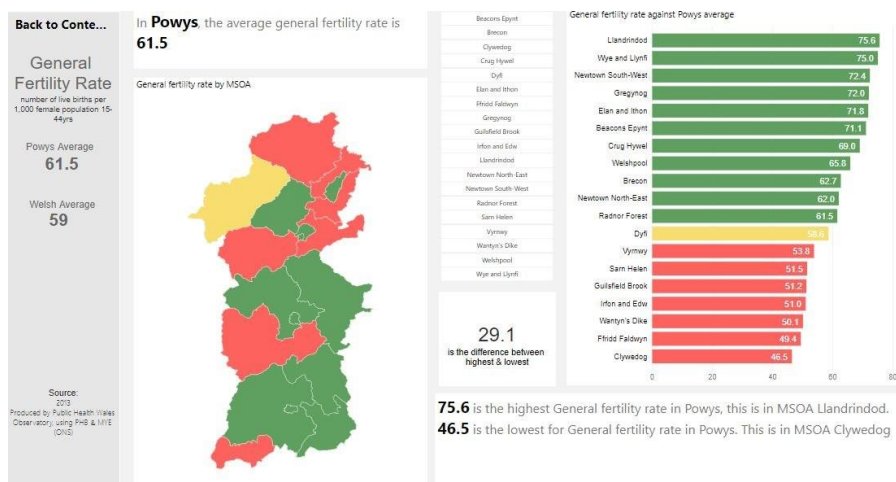


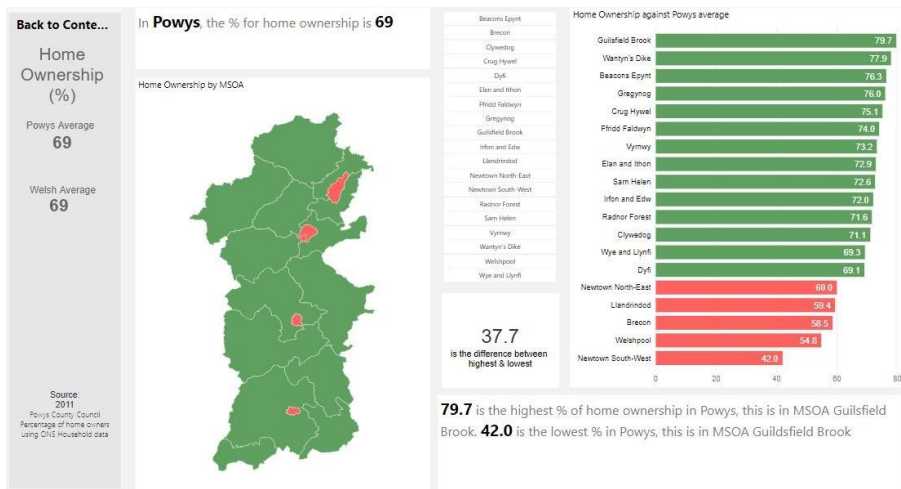
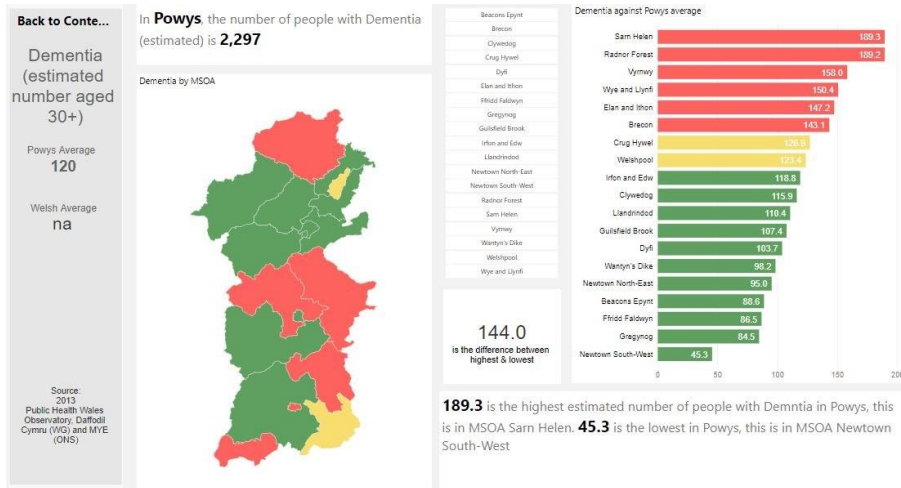


Focus on Well-being

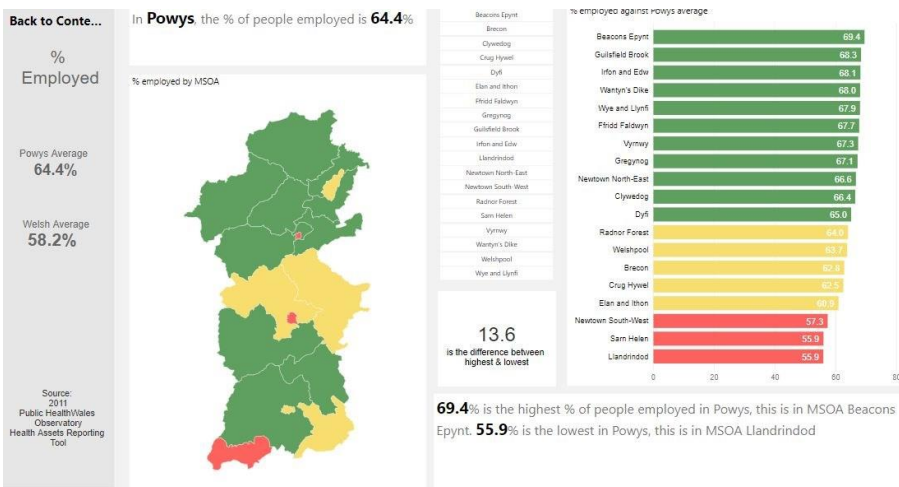
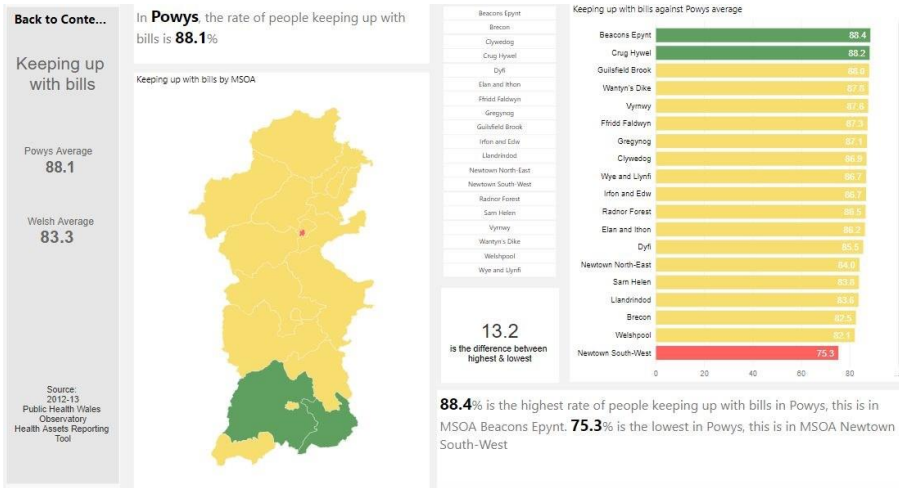
The **North Powys** area with the highest level of below average measures relating to well-being is **Newtown South-West**.

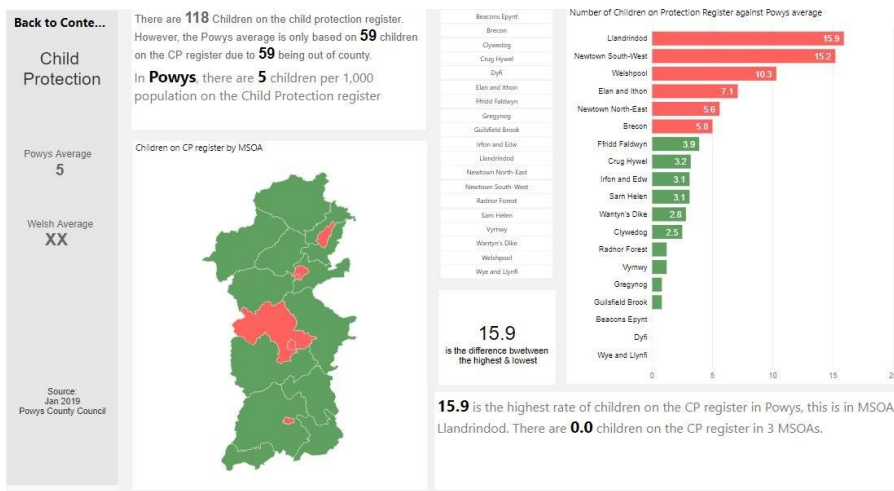
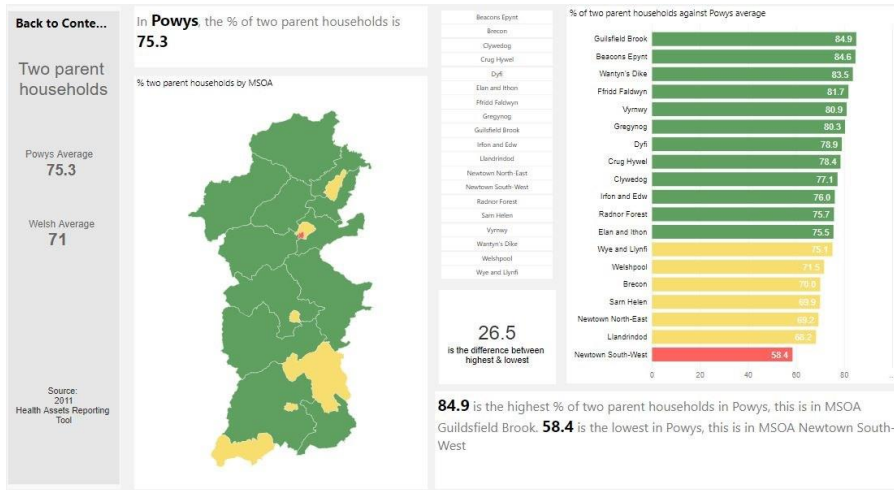
- **General fertility rate** is mostly lower in **more rural areas** of North Powys
- A higher average of **children are living in poverty** in **Newtown South West and Welshpool**
- The estimated number of people living with **dementia** has a higher average in the very north of Powys (**Vrynwy locality**)
- The **lowest levels of home ownership** for North Powys are in **Newtown and Welshpool**



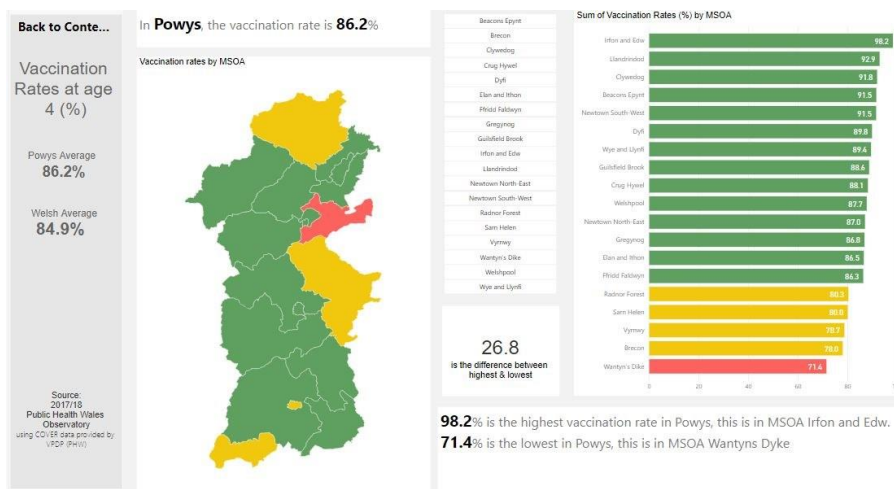


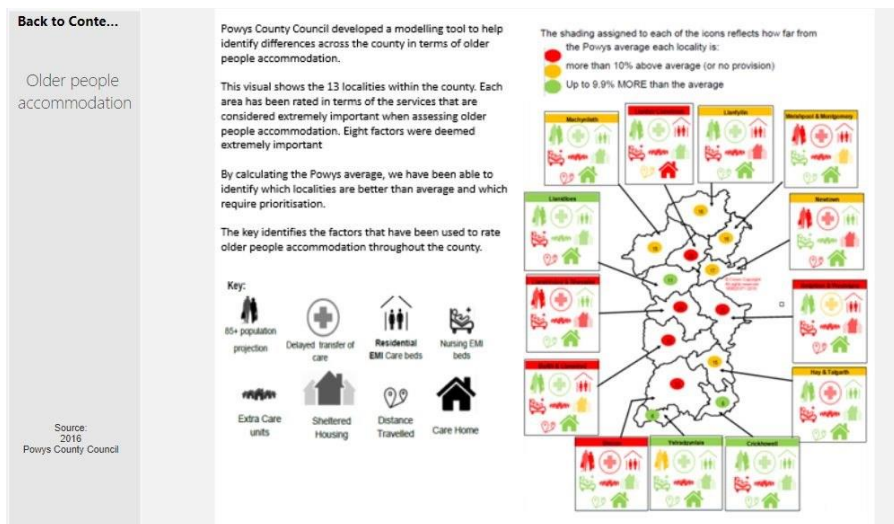
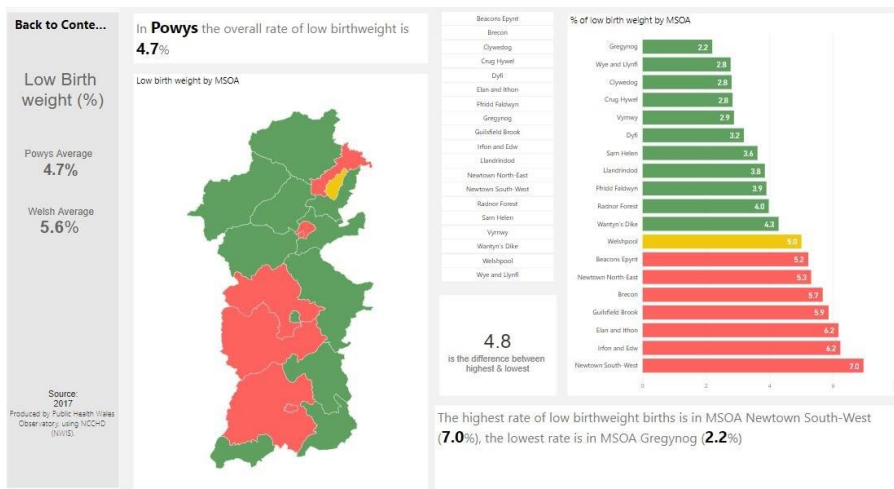
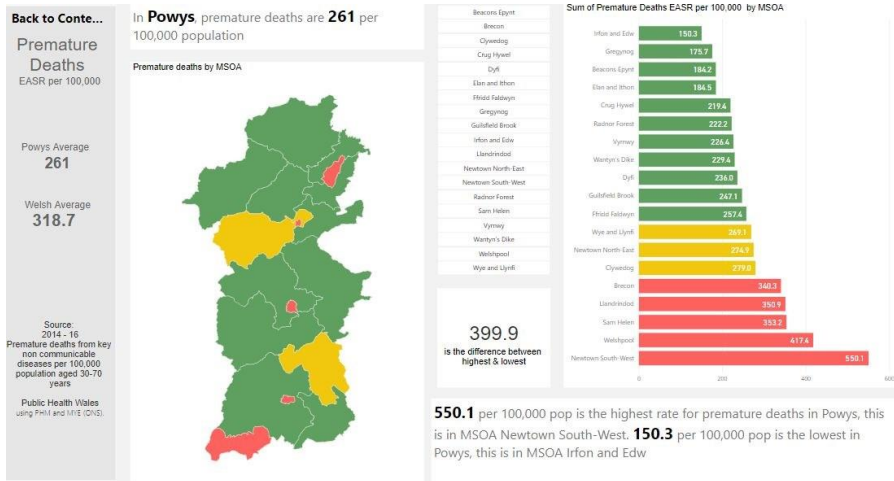
- People in **Newtown South West** have a higher average for those **struggling to keep up with bills**
- **Newtown South West** has the highest average **unemployment** and in general unemployment is rising steeply in Powys
- The **lowest level of satisfaction** with the local area is **Newtown South West**
- Lowest levels of **two parent households** are in **Newtown South West**
- **Children on the child protection register** average rates are high in **Newtown and Welshpool**





- **Vaccination rates at age 4** are lowest in the **Wantyns Dike** ward
- **Premature births** have a higher average rate in **Newtown South West** and **Welshpool**
- **Low birth weights** are higher in **Newtown** and **Guildfield Brook**, north of Welshpool
- There are more pressure points for **older people's accommodation** in the **Llanfair Caereinion** area



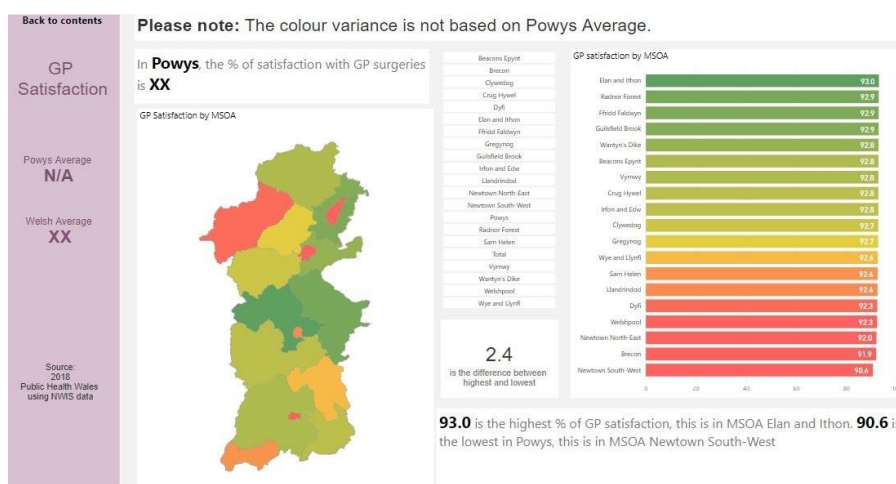
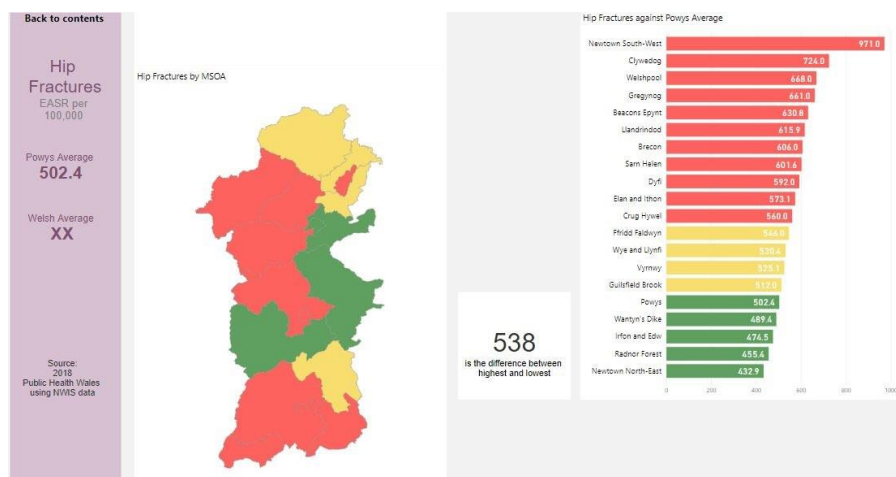
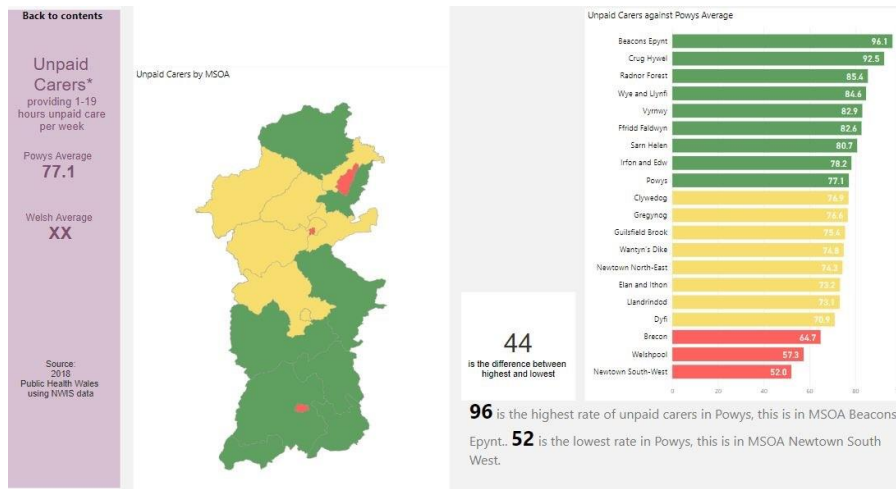


Joined up care

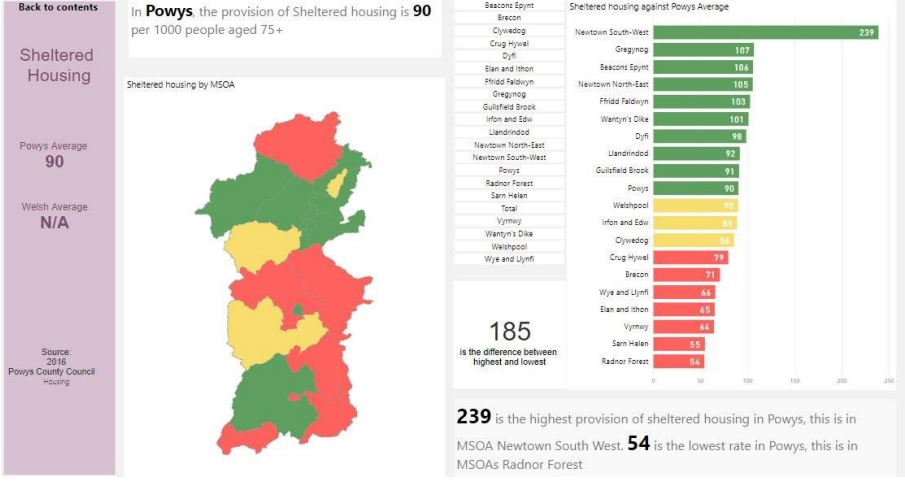
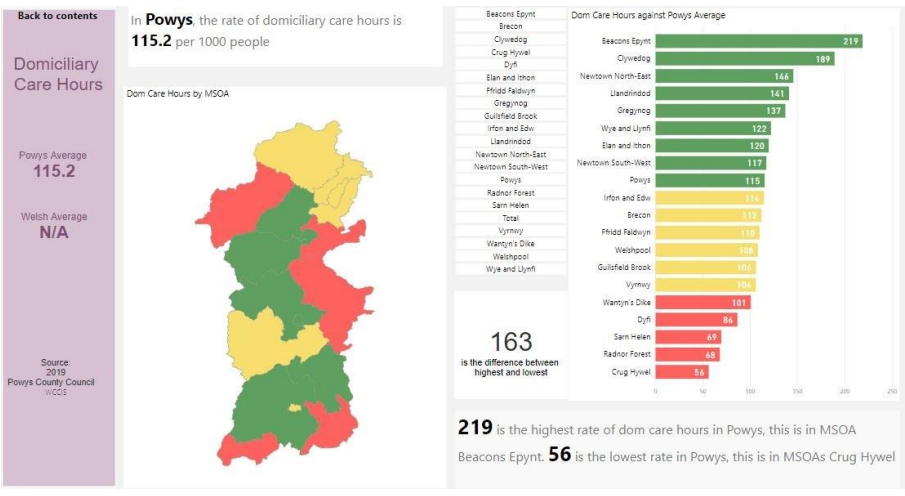
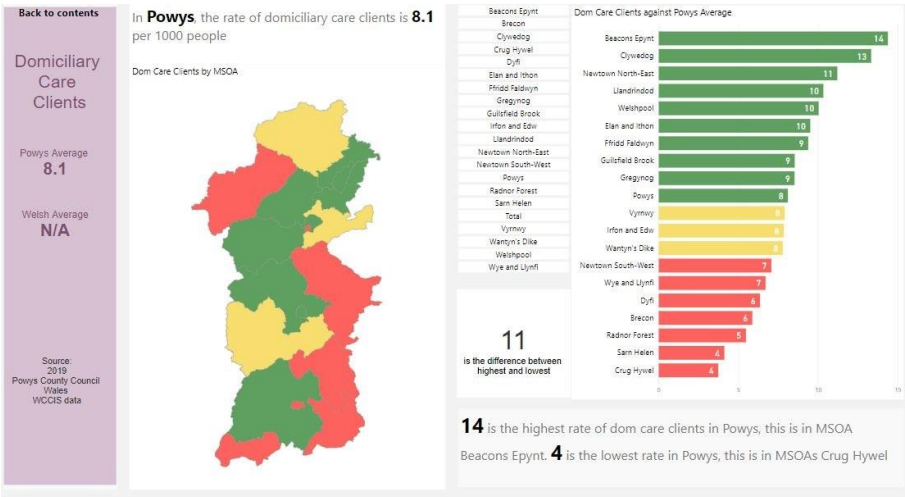
The North Powys area with the highest level of below average measures relating to joined up care is Newtown South West and the Dyfi areas

- The number of **unpaid carers** on average is higher in **Welshpool and Newtown South West**

- **Hip fractures** and more prevalent in **Newtown South West** and **Clywedog** localities
- **Satisfaction with GP's** is lower in **Newtown, Welshpool** and **Dyfi** localities



- The rate of people receiving **domiciliary care** is higher in **Newtown South West** and **Dyfi** localities
- The rate of time spent on **domiciliary care clients** is on average higher in **Wantyns Dike** and **Dyfi** localities
- There is a greater need for **sheltered housing** in the very North of Powys, **Vrynwy** locality



Area overview



<https://sway.office.com/K5dOVVrDpXhCYGcy#content=IC5Z5YUbLy488I>

To see our full analysis click on the links below. If you would like to see a high level overview for each MSOA in the North, scroll down for more information.

Embed://<iframe width="800" height="600" src="https://app.powerbi.com/view?r=eyJrIjoiTU3NjdOTYtODEExZi00MmWJkLTk1YTtMDUxNGVhNjIYWNmliwidCI6ImMwMWQ5ZWUxLTBIYjAtNDc1NC05OWFILTazYWU4YTczMmI1MCIslmMiOjh9" frameborder="0" allowFullScreen="true"></iframe>

Overview of each area

To view each area in detail please select the image below:



